

State of Wyoming Corner Record

(In compliance with the **CORNER PERPETUATION AND FILING ACT**, Wyoming Statutes, 1997 Section 33-29-140 et. seq., and the Rules and Regulations of the Board of Professional Engineers and Professional Land Surveyors)

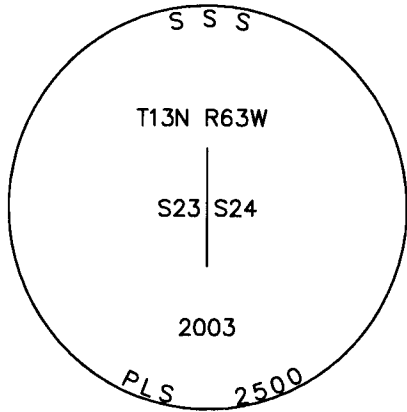
Reverse side of this form may be used if more space is needed.

ORIGINAL RECORD: "SET A WHITE SANDSTONE 15X10X4 FOR 1/4 SECTION CORNER."

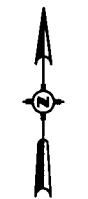
FOUND: 2-1/2" ALUMINUM CAP STAMPED "PLS 2500 2003" AT FENCE CORNER

SET: TWO (2) REFERENCE MONUMENTS: 30" LONG NO. 5 REBAR WITH 2" ALUMINUM CAP STAMPED, "LWS PLS 9387" IN FENCE LINE.

NOTE: BEARINGS AND DISTANCES HEREON ARE BASED ON UTM ZONE 13F - NAD83/NAVD88 AND ARE SHOWN AT GRID. IN ORDER TO OBTAIN GROUND DISTANCES USE A COMBINED SCALE FACTOR OF 1.0006282796.

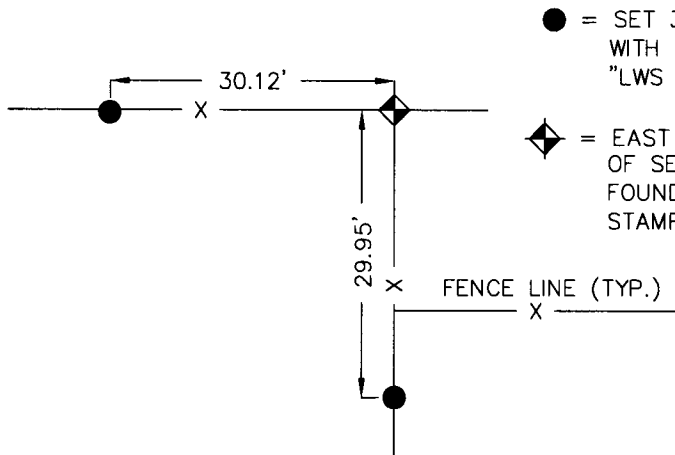


Monument Inscription



N.T.S.

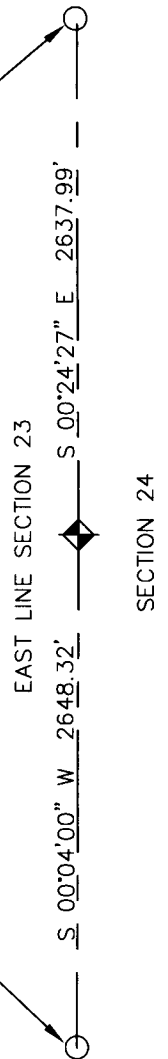
NORTHEAST CORNER OF SECTION 23
FOUND 3-1/2" ALUMINUM CAP STAMPED "PLS 5910"



Reference Monument Location

- = SET 30" LONG NO. 5 REBAR WITH 2" ALUMINUM CAP STAMPED "LWS PLS 9387"
- ◆ = EAST QUARTER CORNER OF SECTION 23 FOUND 2-1/2" ALUMINUM CAP STAMPED "PLS 2500 2003"

SOUTHEAST CORNER OF SECTION 23
FOUND 3" ALUMINUM CAP STAMPED "PLS 2500"

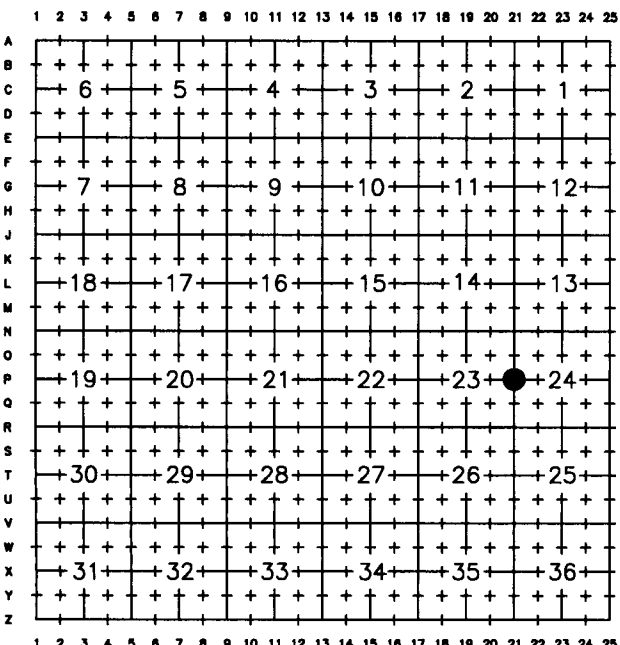


Date of Field Work: 05/31/2012

Office Reference: Project #50612

Monument Location

Cross Index Plat

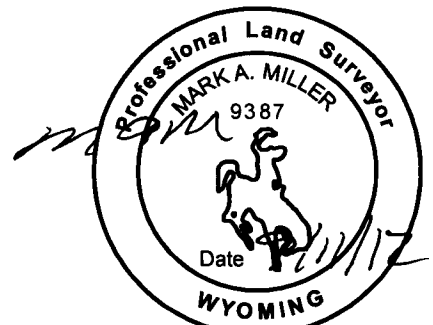


Firm/Agency, Address

Mark Miller, PLS 9387
LW Survey Co.
12345 W. Alameda Parkway
Suite 205
Lakewood, CO 80228
Telephone Number: (303) 658-0358

This corner record was prepared by me or under my direction and supervision.

SEAL & SIGNATURE



RECORDED 9/25/2012 AT 11:56 AM REC# 599587 BK# 2296 PG# 875
DEBRA K. LATHROP, CLERK OF LARAMIE COUNTY, WY PAGE 1 OF 1

Corner Name East Quarter Corner Section 23, T 13 N, R 63 W, 6th P.M. Cross-Index No.: P-21

County: Laramie Wyoming

SBRPEPLS/PLSW: March 1994; PLSW January 1998